



BOMBAY  
SHAVING  
COMPANY

**GET YOUR  
GROOMING GAME ON**



© 2014 BOMBAY SHAVING COMPANY

## DESIGNED TO CARE

We believe that being well-groomed is a lifestyle; it shows through how you look, smell and behave. Our range of grooming products is thoughtfully designed with the finest ingredients and fragrances, to keep the side of you looking sharp.



## THOUGHTFULLY SOURCED

Our ingredients are hand-picked and carefully formulated into a product that promises to deliver superior results.



## WE ADDED MORE JOY

From texture to the aroma, ease of application, and the indulgent goodness: immerse yourself in a grooming experience like no other.



## SATISFACTION GUARANTEED

We strive to go above and beyond along every step of your journey to ensure complete satisfaction.



## 6-PART SHAVING SYSTEM

Discover a whole new world of shaving with our Signature shaving regimen. Comfort, ingenuity available.

includes: precision safety razor, pack of 20 leather Scudders blades, the Shave Scrub, Shaving Cream, Shaving brush, mini Shave foam, Aggressive Clamp, razor Sheath and Shave pan

RRP: €13,475



## 3-STEP SHAVING REGIMEN

Our men's define that shaving should be a routine task. We built our shaving regimen on expansion, replenishment and restoration.

includes: the Shave Scrub, Shaving Cream, Shaving brush, mini Shave foam and Shave ball

RRP: €1,150



## SHAVE CARE ESSENTIALS

A good day starts with a great shave. Our shave care essentials are designed to start your morning off the right way.

Included: Pre Shave Scrub, Shaving Cream, Post Shave Soothe and Shave Oil.

RRP: £1,030



## COMPLETE SHAVE CARE KIT

All the essentials of the perfect shave - this kit includes everything you will need to groom with confidence.

Included: Pre Shave Scrub, Shaving Cream, Post Shave Soothe, Beard VG and Shave Oil.

RRP: £1,175



## BEARD GROOMING KIT

Specially formulated with the finest ingredients to keep your facial hair looking, smelling and feeling fantastic.

Includes: beard Oil (Cedarwood), beard Shampoo & Conditioner, Moroccan Wax, and a Staped beard Comb.

RRP: £150



## BEARDINATOR

A carefully curated kit which follows a scientifically proven 4-step regimen that helps you grow a long, strong beard.

Includes: beard Growth Oil (Olive), beard Activator, Charcoal face Wash, Mandarina Peppier, beard Growth Tracker.

RRP: £80

## SHAVE CARE RANGE



### PRECISION SAFETY RAZOR

Committed to precision with a smooth classic finish. Includes 1 Precision Safety Razor, 10 replace blades, 2 clamps for mild and aggressive shaving and 1 razor stand.  
RRP - £ 184



### DEXTER VE

Resulting like you've never been shaven, the DEXTER VE razor will shave independently independent and a two-way pivoting head to effortlessly follow the contours of your face.  
RRP - £ 111



### DOUBLE EDGE SAFETY RAZOR

A cost-effective shaving solution designed to deliver close, clean and comfortable shaves. Anti-clog design and steady grip for safe, efficient shaving.  
RRP - £ 19

## SHAVE CARE RANGE



### PRE-SHAVE SCRUB

This pre-shave scrub exfoliates, soothes and smooths the skin, removing trapped hair in the process.

100 gtl | RRP £2.45

45 gtl | RRP £1.25



### SHAVING CREAM

Hydrating, creating a rich, creamy lather that effectively lifts your hair from the base.

100 gtl | RRP £2.95

45 gtl | RRP £1.35



### POST-SHAVE BALM

An alcohol-free, plant stem cooling balm. Soothes and repairs the skin without leaving a burning sensation.

100 gtl | RRP £2.95

45 gtl | RRP £1.35



NEW

## SHAVE CARE RANGE



### BEARD COLOUR:

A 100 drop, 100% natural solution that nourishes, repairs and adds to naturally falling out, a youthful and luxuriant looking beard.

\*Available in stock & online formats.

Lot 101 | 1 unit | 24.00



### ATHENA:

Equipped with its independently suspended blades and easy-rinse system, provides an irritation-free shave in a matter of minutes, seconds, even.

Lot 101 | 1 unit



### CHARCOAL

#### SHAVING FOAM

Provides superior glide and protection against our signature ultra-soft formula with activated Charcoal, Moroccan Argan Oil and Chamomile extracts.

245 gm | 1 unit | 24.00

NEW

## SHAVE CARE RANGE



### COFFEE SHAVING FOAM

energizes & hydrates the skin using antioxidant-rich coffee extract, macadamia nut oil and olive oil.  
244 gm / 1.11oz - 245



### TURMERIC SHAVING FOAM

calms the skin and induces serenity using the antioxidant benefits of turmeric and aloe.  
244 gm / 1.11oz - 245



### APPLE CIDER VINEGAR SHAVING FOAM

balances the pH level of your skin and prevents acne using Apple Cider Vinegar, Salicylic Acid and honey.  
244 gm / 1.11oz - 245



### SENSITIVE SHAVING FOAM

eliminates razor burn, itch & red, and prevents razor burn using aloe vera, oats and olive oil.  
244 gm / 1.11oz - 245 gm

A man with dark hair, wearing a white button-down shirt and blue jeans, is sitting on a white, rounded chair. He is holding an open book and looking thoughtfully out of a window to his right. His left hand is resting on his chin. In the foreground, a small black metal table holds a grey ceramic diffuser with a plant inside, emitting a mist. To the right, a wooden windowsill holds a white mug and a small potted plant. The background is a bright window with light streaming in.

ALL THE CARE  
YOU NEED.

SKIN | BATH

## SKIN & BATH RANGE



### SKIN CARE ESSENTIALS KIT

A skin care essentials combo packed with products to provide your skin with the hydration and care it deserves.

includes: Face Cleanser, Face Moisturiser, Oil Control Bath Soap, Hydrating Bath Soap, and Cotton towel.

RRP: £ 1,175



### COMPLETE SKIN CARE KIT

A deeply hydrating and rejuvenating combo packed with products essential for nourished and healthy skin.

includes: Hydrating Bath Soap, Oil Control Bath Soap, Deep Cleansing Bath Soap, Hydrating Bath Soap, Face Cleanser, Face Moisturiser and Cotton towel.

RRP: £ 1,545

## SKIN & BATH RANGE



### CHARCOAL DE-TAN KIT

This combo of our Activated Charcoal skincare is designed to deliver the ultimate deep cleaning experience.

Included: Charcoal Face Mask, Charcoal Peel-Off Mask, Deep Cleansing Wash Soap, and Deep Clean Charcoal Face & Body Wash.

RRP: £65



### CHARCOAL FACIAL STARTER KIT

A powerful skin detoxifying Charcoal Starter Kit designed for a thorough facial deep cleanse.

Included: Charcoal Face Mask, Charcoal Face Scrub, Charcoal Peel-Off Mask, and Charcoal Face Wash.

RRP: £70

## SKIN & BATH RANGE



### ABSOLUTE CARE FACE & BODY WASH COMBO

A set of 4 premium face and body washes, thoroughly nourishes and softens dry skin.

Includes: Purifying face & body wash, Deep Cleanse face & body wash, Refreshing face & body wash, Nourishing face & body wash.

RRP: \$1,280



### EXFOLIATING BATH SOAPS

A set of four exfoliating bath soaps, expertly crafted by hand with active ingredients that are 100% natural.

Includes: exfoliating bath soap, Oil Control bath soap, Deep Cleansing bath soap and Moisturising bath soap.

RRP: \$100

## SKIN CARE BATH RANGE



### FACE MOISTURISER

A unique blend of 5 essential oils  
for soft and supple skin.

100 gnl | MRP: ₹ 255

45 gnl | MRP: ₹ 145



### FACE CLEANSER

A deep cleansing wash for  
toughness, balanced skin care.

100 gnl | MRP: ₹ 255

45 gnl | MRP: ₹ 145

SKIN & BATH RANGE



DEEP CLEAN  
FACE & BODY  
WASH

Eliminates dirt & grime  
& polishes your skin.  
200 ml / 6.76 fl. oz.



MOISTURISING  
FACE & BODY  
WASH

Shea butter creates a rich  
foam to gently cleanse skin.  
200 ml / 6.76 fl. oz.



REFRESHING  
FACE & BODY  
WASH

Infused with soothing  
menthol and aloe vera.  
200 ml / 6.76 fl. oz.



PURIFYING  
FACE & BODY  
WASH

Enriched with the purifying  
qualities of green tea.  
200 ml / 6.76 fl. oz.



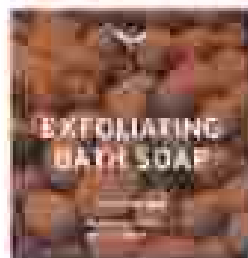
## SKIN & BATH RANGE



### DEEP CLEANSING BATH SOAP

Removes dirt from your pores  
leaving your skin looking  
clear.

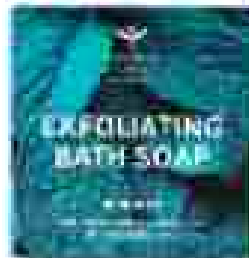
100 gms / 1.4oz / 1 lbs.



### MOISTURISING BATH SOAP

A nourishing Shea butter  
stop to soothe your dry  
skin.

100 gms / 1.4oz / 1 lbs.



### REFRESHING BATH SOAP

A menthol-based soap  
that refreshes and  
exfoliates the skin.

100 gms / 1.4oz / 1 lbs.

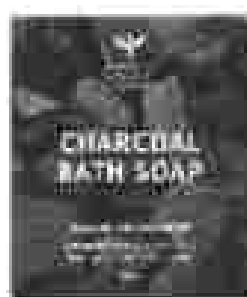


### OIL CONTROL BATH SOAP

Tea tree oil & charcoal  
infused soap to restore  
skin's natural oil balance.

100 gms / 1.4oz / 1 lbs.

## SKIN & BATH RANGE



### CHARCOAL BATH SOAP

A handmade soap that helps  
remove everyday dirt and  
grime from the skin of leave  
it clear and refreshed.  
125 gms / 4.4oz / \$125



### SHEA BUTTER BATH SOAP

A handmade soap that is  
incredibly nourishing and  
counteracts drying effects of  
the weather, leaving it soft.  
125 gms / 4.4oz / \$125

## CHARCOAL SKIN RANGE



### CHARCOAL FACE WASH

Eliminate dirt, dead skin cells and pollution. Unlogs pores and removes excess oil.  
100 gm | RRP - ₹ 249  
45 gm | RRP - ₹ 129



### CHARCOAL FACE SCRUB

Activated Charcoal purges skin of dirt and impurities while gently exfoliating it.  
100 gm | RRP - ₹ 249  
45 gm | RRP - ₹ 129



### CHARCOAL PEEL-OFF MASK

A powerful skin detoxifying formula for a thorough skin deep cleanse.  
100 gm | RRP - ₹ 219  
40 gm | RRP - ₹ 109

## CHARCOAL SKIN RANGE



### CHARCOAL FACE SHEET MASK

Easy to-apply skin hydration is better is firmer, plumper and repair your skin with the thoughtfully designed Charcoal Face Sheet Mask.  
100g £14.9



### CHARCOAL FACE PACK

A restorative Charcoal Face Pack to repair damaged or tanned skin.  
100 gm £14.99  
50 gm £11.99

A man with a beard and dark hair, wearing a dark grey suit, a light-colored shirt, and a dark tie, stands in a modern, well-lit interior. He is looking to his right with a slight smile. His hands are clasped in front of him. The background is blurred, showing a contemporary living space with a white sofa, a coffee table, and a large window. The text "CUSTOMISED GIFT SETS FOR THE PERSONALISED TOUCH" is overlaid on the right side of the image.

**CUSTOMISED GIFT  
SETS FOR THE  
PERSONALISED TOUCH**

## CUSTOMISATION AVAILABLE ON PACKAGING



PERSONALISE YOUR KIT



CUSTOMISATION ON PACKAGING

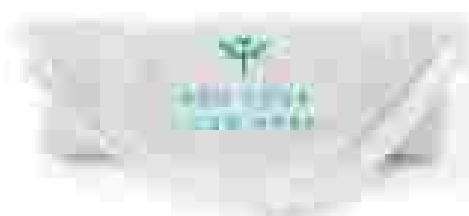


For customisation HQs, contact our corporate sales team at [corporate@showercompany.com](mailto:corporate@showercompany.com)

## CUSTOMISATION AVAILABLE ON PACKAGING



CUSTOM ENGRAVING AVAILABLE



CUSTOM EMBROIDERY AVAILABLE

For customisation HQs, contact our corporate sales team at [CorporateSales@bentleyshaving.com](mailto:CorporateSales@bentleyshaving.com)

## ALL PRODUCTS

### SHAVE CARE

Irresistible Safety Razor	€ 1,845
Shaving brush	€ 795
Post Shave Balm (100 gm / 4.5 gm)	€ 355 / € 195
Pre Shave Scrub (100 gm / 4.5 gm)	€ 245 / € 125
Realism blades (10 pcs.)	€ 265
Shaving Cream (100 gm / 4.5 gm)	€ 275 / € 135
Shave tub	€ 795
Double Edge razor	€ 245
Beard oil	€ 345
Aftershave	€ 245
Charcoal Shaving Foam (254 gm)	€ 245
Hydrate Shaving Foam (254 gm)	€ 235
Sensitive Shaving foam (254 gm)	€ 245
Coffee Shaving foam (254 gm)	€ 295
Apple Cider vinegar Shaving foam (254 gm)	€ 295

MRP\*

### BATH CARE

Refreshing bath soap	€ 185
Oil Control bath Soap	€ 195
Deep Cleansing bath Soap	€ 185
Moisturizing bath Soap	€ 195
Charcoal bath Soap	€ 175
Shave Error bath Soap	€ 125
Body Cream face & body Wash	€ 245
Moisturizing Face & body Wash	€ 245
Refreshing face & body Wash	€ 295
Hydrating Face & body Wash	€ 295

MRP\*

### SKIN CARE

Face Charcoal (100 gm / 4.5 gm)	€ 235 / € 145
Face Moisturizer (100 gm / 4.5 gm)	€ 275 / € 145

MRP\*

\*Minimum of 10 items



## ALL PRODUCTS

### BEARD CARE

Beard Growth Oil (100ml / 3.3oz)	£ 245 (€ 245)
Hair & Beard Serum (100ml)	£ 205
Beard Softener Cream (50g)	£ 245
Beard Oil (Cedarwood, Thyme)	£ 205
Beard Oil (Druck)	£ 205
Beard & Mustache Wax (10g)	£ 205
Face & Beard Wash (100ml)	£ 105

### CHARCOAL SKIN RANGE

Charcoal Face Wash (100g / 3.5oz)	£ 245 (€ 245)
Charcoal Scrub (100g / 3.5oz)	£ 245 (€ 245)
Charcoal Peel-off Mask (100g / 3.5oz)	£ 215 (€ 215)
Charcoal Face Mask (100g / 3.5oz)	£ 215 (€ 215)

### ACCESSORIES

Travel Kit	£ 305
Beard Brush	£ 205
Beard Comb Pocket-Size	£ 205
Beard Brush Pocket-Size	£ 205
Beard Comb in Storage	£ 205

\*Exclusive of all taxes

## OUR CLIENTS



**DIAGEO**



## OUR CLIENTS



**PHILIPS**



## CONTACT

---

For commission and bill orders

+91 71034 80233

[corporatesales@bmbuyshavingcompany.com](mailto:corporatesales@bmbuyshavingcompany.com)

[www.bmbuyshavingcompany.com](http://www.bmbuyshavingcompany.com)

---

F-2/1/8 Lado 1 area, Old New road,  
New Delhi - 110 030